



CONTACTS

Import & Export General Manager: **Zhang Chunmei**

Tel: **+86 13951315656**

E-mail: **zcm@texhong.com**

Add: **Floor 23, Building C, No. 88 Second East Zhongshan Road,
Bond Soho,Huangpu District, Shanghai, P.R.C., 200002**

TEXHONG
MOST COMPETITIVE CORE SPUN YARN PRODUCER
TEXHONG(CHINA)INVESTMENT CO.,LTD

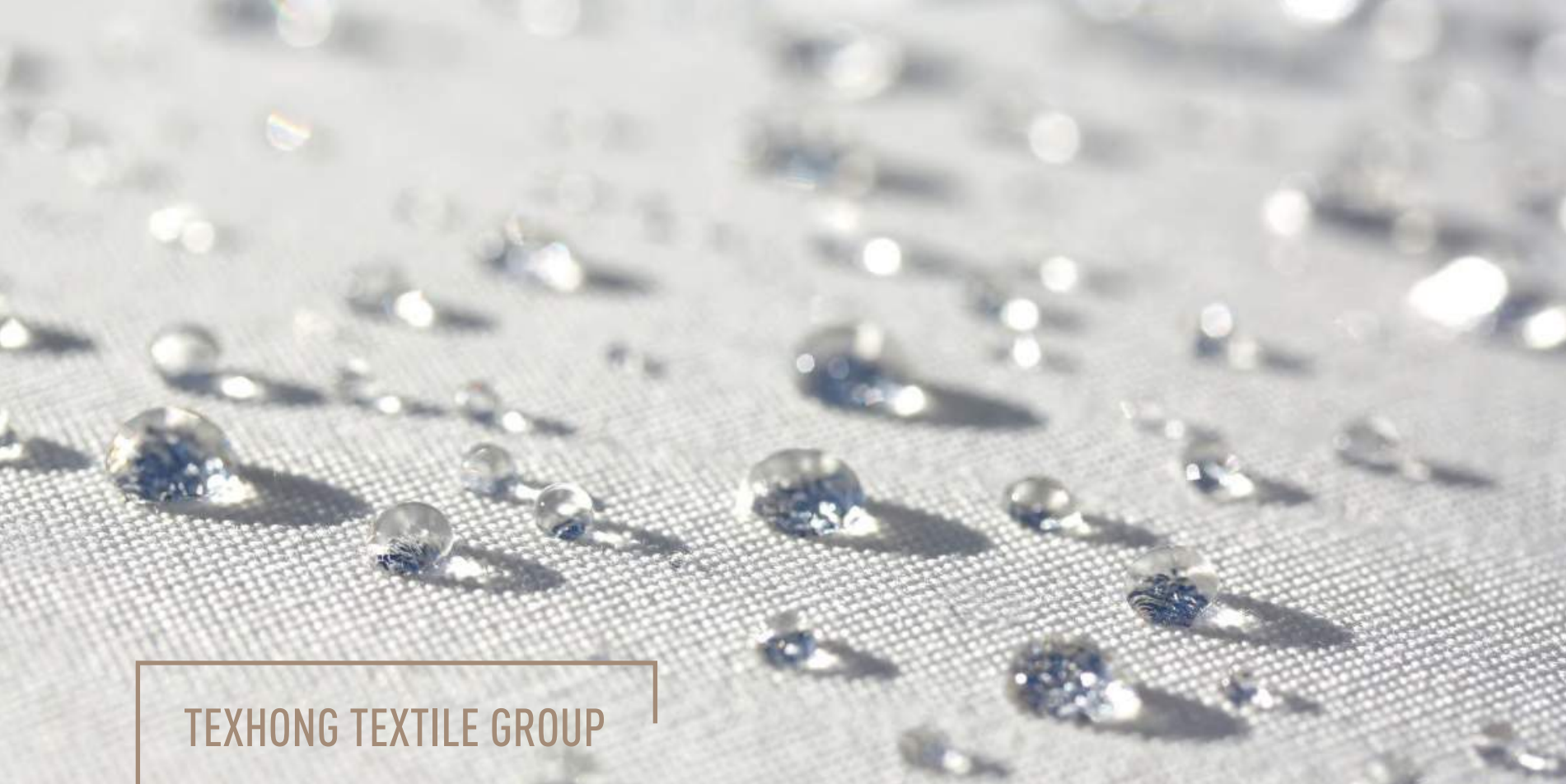


CONTENTS

Texhong Textile	01
Texhong China	02
Texhong dual core yarn	03
Texhong colored yarn	07
Texhong tarimu yarn	11
Solucell Air	15
Texhong differentiation yarn	19
Texhong cotton yarn	23
Texhong super soft yarn	27
Texhong linen-style tencel yarn	31

CREATEA
WONDERFUL LIFE





TEXHONG TEXTILE GROUP

1997

1997 Established in 1997
by founder Mr. Hong Tianzhu

TOP 500

Amount 2017 Fortune 500
Companies in Mainland China

NO.1

No.1 Cotton Corespun
Yarn Producer in the world

TOP 10

Top 10 Most Competitive
Cotton Textile Enterprises



Listed on Hong Kong
Stock Exchange,2678.HK

TEXHONG INTRODUCTION

Spinning

Weaving

Dyeing & Finishing

Knitting

Denim Garments

CAPACITY & PRODUCTION BASIS

- 4 Million Spindles <2200 T/Day>
- China/Vietnam/Turkey/USA/Mexico/Nicaragua/Cambodia/Taiwan

SPINNING WAY

- Ring-spun
- Siro-spun
- Compact & Compact-Siro
- MVS & OE

USAGE

- Denim
- Weaving
- Knitting
- Hometextile

WHAT WE ARE USING

COTTON Pima,US,Austrilia,Xinjiang...BCI, Organic	CELLULOSE FIBER Tencel-G100/A100/LF,Refibra,Gracel Modal,Micro Modal,Micaro Modal Air,Pro Modal
SPANDEX-20D/30D/40D/70D/105D Lycra,Elaspan,Corea,Huafung,XLA	NYLON Cordura, Nylon6 Nylon Filament DTY/FDY
VISCOSE Lenzing,Birla,VILOFT,ECOVERO...	ACYLIC FIBER Chinese/Janpan/German brand AMICOR,Semi-Dull,Anti-Pilling
POLY FILAMENT-AS CORE T400,DTY,PBT,Nylon	WOOL
POLY STABLE FIBER Normal,Long,Cationic,Coolmax,Thermolite Repreve,Sorbtek,Sorona...	LINEN
PVA STABLE FIBER	BAMBOO
CUPRO	JADE FIBER
COPPER FIBER	SOLUCELL

WHAT WE ARE PRODUCING

COUNTS: NE5S TO NE100S			
A/R	AB Yarn	Slub Yarn	T/R
T/L	Color Yarn	Blend Yarn	R/L
C/L	Tarimu Yarn	Patch Yarn	T/C
A/R/C	Corespun Yarn	Linen Style Yarn	CVC
Cooper/C	Dual Core Yarn	Woolen Touch Yarn	T/B
Coolmax/C	Solucell Air Yarn	Texhong Cotton Yarn	R/C
Poly Yarn			C/B
Modal Yarn			C/L/N
Cotton Yarn			C/PVA
Tencel Yarn			Modal/C
Viscose Yarn			Tencel/L
Thermolite/C			T/Tencel
T/R Dual Core			Tencel/C
Cotton Dual Core			Linen Style Tencel/L

TEXHONG

DUAL CORE YARN

To meet customer's requirement on rebound elasticity. An updated product based on traditional corepsun yarn.



TEXHONG DUAL CORE YARN

ATTRIBUTION

- Well covered.
- Outside fiber can be different materials
- Inside core can be different filaments



DENIMS



DYEING FABRICS



KNITTING FABRICS



YARN DYE FABRICS

USES

Yarn Counts: Ne10S – 32S
 Can be widely used for denims, dyeing fabrics, knitting fabrics, yarn dye fabrics



TEXHONG COLORED YARN

Texhong Textile is a professional manufacture of core spun yarn. Research and development of core spun yarn have always been one of our top priorities. Many dyeing facilities still face some challenges when dealing with core spun yarns; therefore we developed this series of colored spun yarn that is mainly composed of chemical fibers, in order to ensure the stability of the elasticity of core spun yarn, making in more convenient for our clients.



TEXHONG COLORED YARN

BLACK POLYESTER VISCOSE SERIES

- This series is specially designed to be used as denim weft, no need for dyeing.
- Can be made into core spun yarn or dual core yarn, elasticity of the fabrics is more stable.
- Can supply yarns with different blend ration upon clients' request.



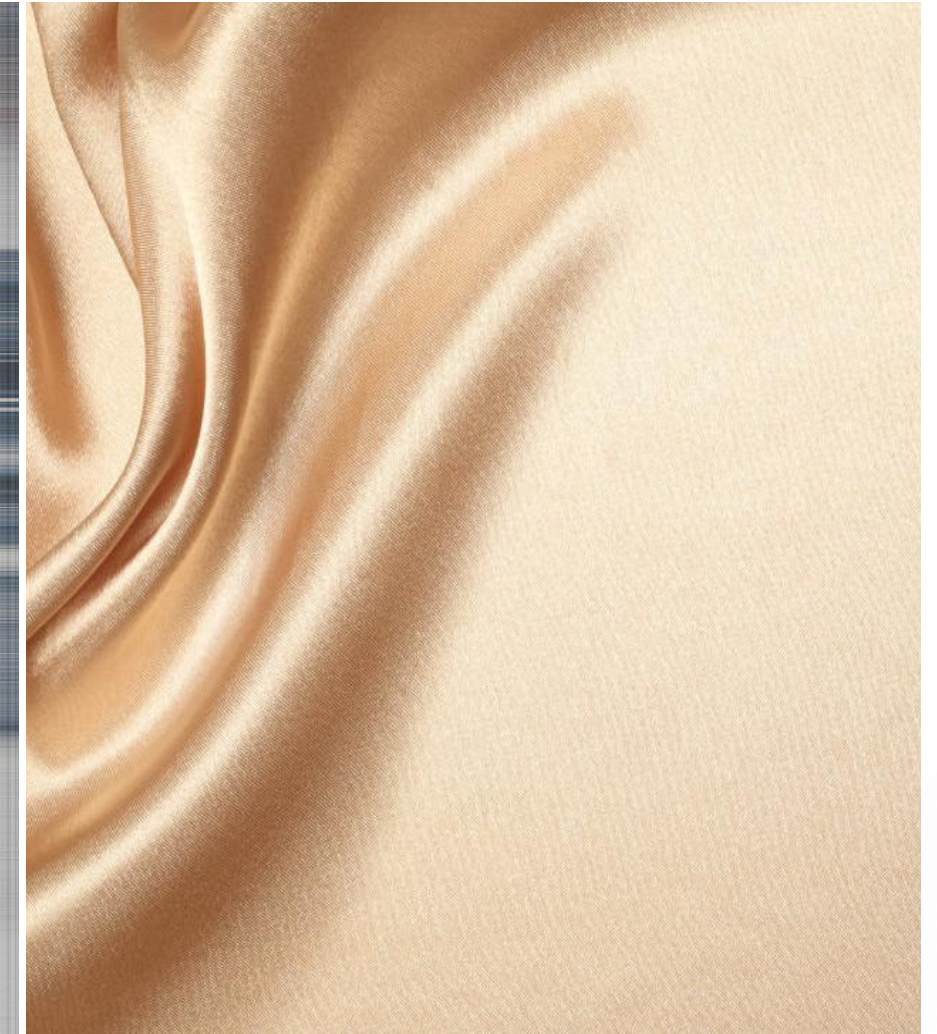
BLACK AND MELANGE GREY VISCOSE SERIES

- Color master batch dyeing, colors are long-lasting
- Suitable for knitting and weaving



BLACK COTTON, COLORED COTTON, AND BLEND SERIES

- Raw cotton undergoes reactive dyeing, colors are soft and saturated with good color fastness.
- Color fastness can reach level 4-5, reduced color difference amongst dye lots.
- Elasticity of fabrics is more stable when this series is made into cotton or blend core spun yarn.
- Warp colored spun yarn can directly undergo sizing for denim production, such yarn has a unique style and the process is environmentally-friendly and easy.



COLORFUL T/R SERIES

- Colour the fabrics with plentiful colors.
- To get a cleaner and softer fabric with our professional technology
- Developing and sampling are welcome.

TEXHONG TARIMU YARN

Texhong Tarimu yarn is developed and produced in Tarim Basin, Xinjiang. Many designers had been attracted by this yarn due to the special attributions. You can feel dry , comfortable and ventilate.



Hydroscopic
and quick dry



Ventilate



Anti-pilling





TEXHONG TARIMU YARN



SUMMER T-SHIRTS



DUST-FREE FLEECE



KNITTING HOME TEXTILES



SPORT SOCKS



DUST-FREE TOWELS

ATTRIBUTION OF YARN

- Dry ,comfortable and pallesthesia hand feeling
- Yarn is clean and bright, no hairiness

ATTRIBUTION OF FABRICS

Hydroscopic ,quick dry and ventilate

- By using high grade cotton and special spinning technology, hydroscopic effect is 150% higher comparing to the T-Shirts made from normal yarns
- After test, Ventilate index is 1.66 times comparing to the fabrics made from normal yarns. Suitable for Spring and Summer seasons.
- Degree of dyeing is much better and can save dyeing cost

Fabric is clean, bright and no hairiness

- Suitable for dust-free fleece.
- Anti pilling index is more than 3.5 degree, suitable for the products asking for high requirement on hairiness.

No transformation after 20 times washing

- Different from the normal knitting T-Shirts.

USES

Summer T-Shirts, Dust-free fleece, Knitting home textiles, Sport socks, Dust-free towels.

SOLUCELL AIR



100% Hollow
Core Yarn



Soft and Light



Thermoregulation
quick dry



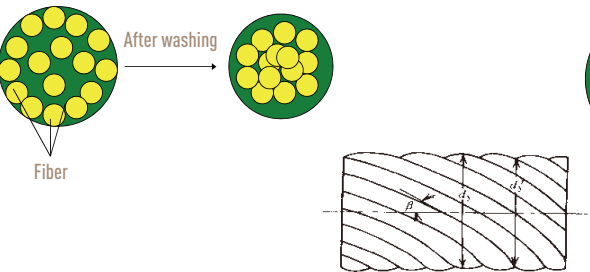
comfortable



ORDINARY COTTON

After several times washing, the twist urge fibers to translate to the center and makes the yarns tighter. The fabric becomes harder and harder.

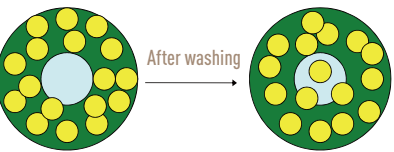
ORDINARY YARN SECTION



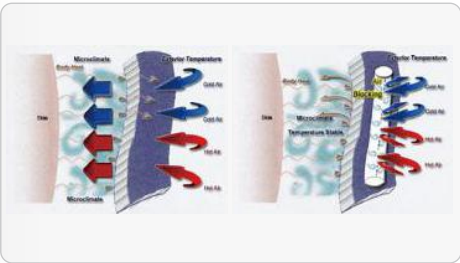
SOLUCELLAIR COTTON

The hollow part in the yarn provides fiber's larger space to move. The fabric maintains soft and fluffy even after repeated washings.

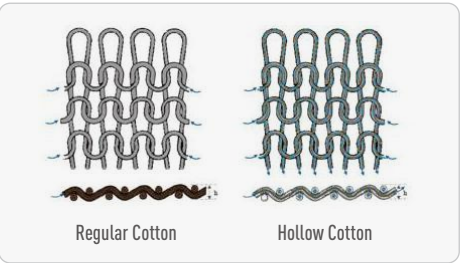
HOLLOW YARN SECTION



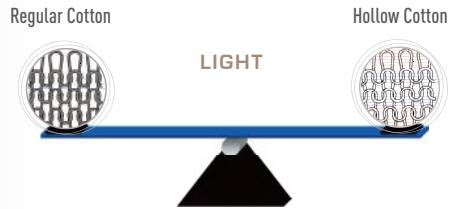
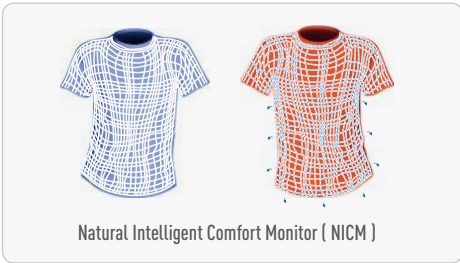
REGULAR FABRIC SOLUCELL AIR FABRIC



QUICK DRY



REGULAR COTTON SOLUCELLAIR-COTTON



THERMOREGULATION





TEXHONG

DIFFERENTIATION YARN

Texhong Textile is not only a professional manufacturer of core spun yarn, but is also an innovator in terms of producing and developing differentiation products. Differentiation and slub yarn are two of our key products.



Diversified materials

Close partnership with famous material suppliers, raw material is guaranteed.



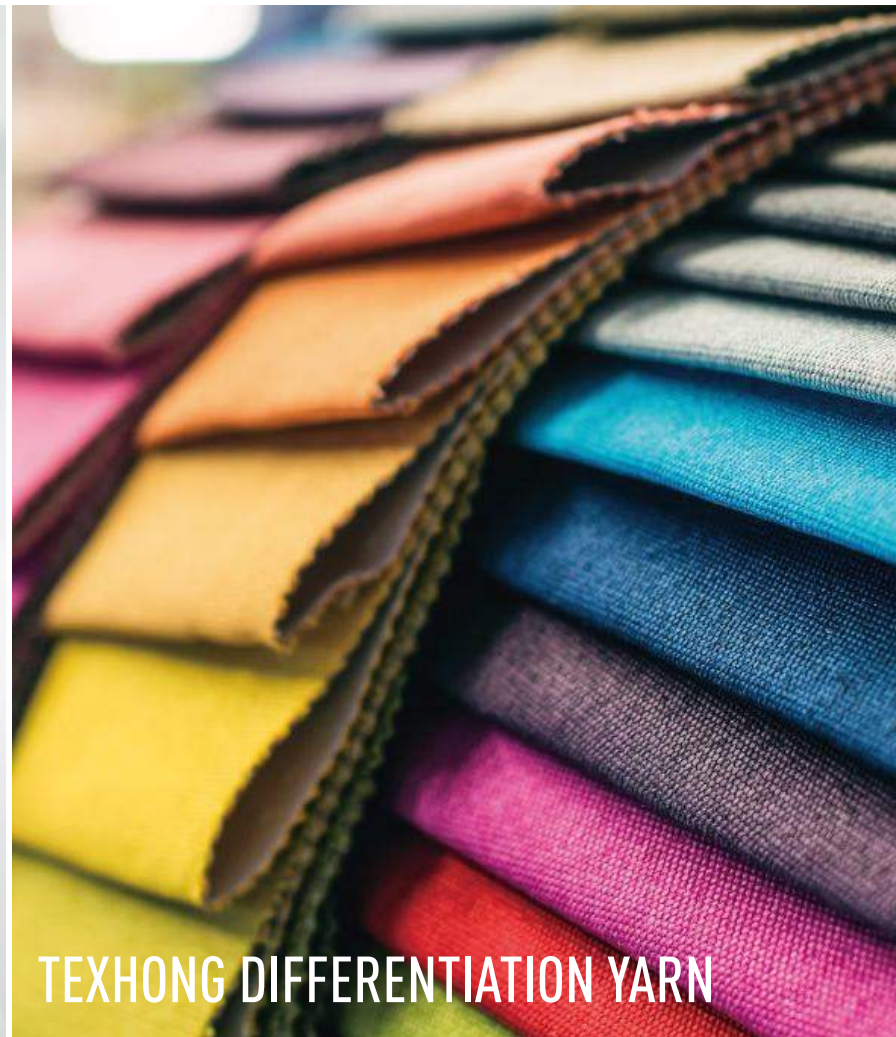
More comfortable

Excellent elastic recovery, comfortable and shape retaining.



Fashion Trend

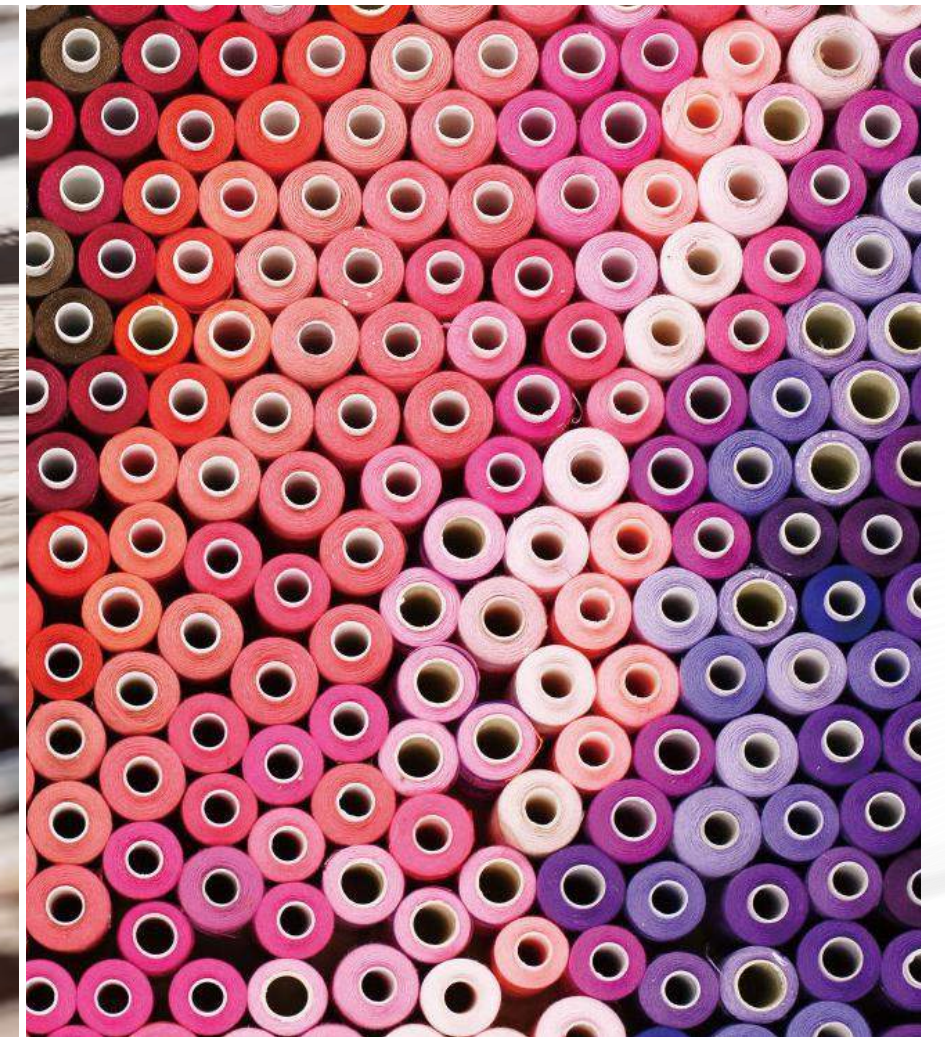
Super elastic core spun yarn is becoming an industry trend.



TEXHONG DIFFERENTIATION YARN

POLYESTER SERIES

- Cationic polyester, polygonal polyester, and other polyester and blend products.
- Polyester and other fibers blended AB yarns emphasize a brand new fabric style.
- Polyester viscose and polyester cotton core spun yarns are some of the common products.



TENCEL SERIES

- Close partnership with Lenzing Group.
- Diversified spinning methods: compact, ring spun, compact siro spun are all available, and the supply is sufficient.
- Both Tencel core spun yarn and slub yarn products have stable quality.

VISCOSE SERIES

- Viscose raw materials all come from Lenzing Group, and have excellent dyeing property.
- Viscose core spun yarns has great covering effect and are well-liked by clients.
- Viscose slub linen-like yarn adapts to the linens-like trend of recent years, while slub yarns have high variations.

TEXHONG COTTON YARN

Texhong Cotton Yarn is a yarn product exclusive to Texhong Group. American cotton fibers and Lyocell fibers are blended for the yarns and are manufactured using unique spinning technique.



Soft and smooth touch

An improvement to the stiff texture of pure cotton



Color is bright and saturated

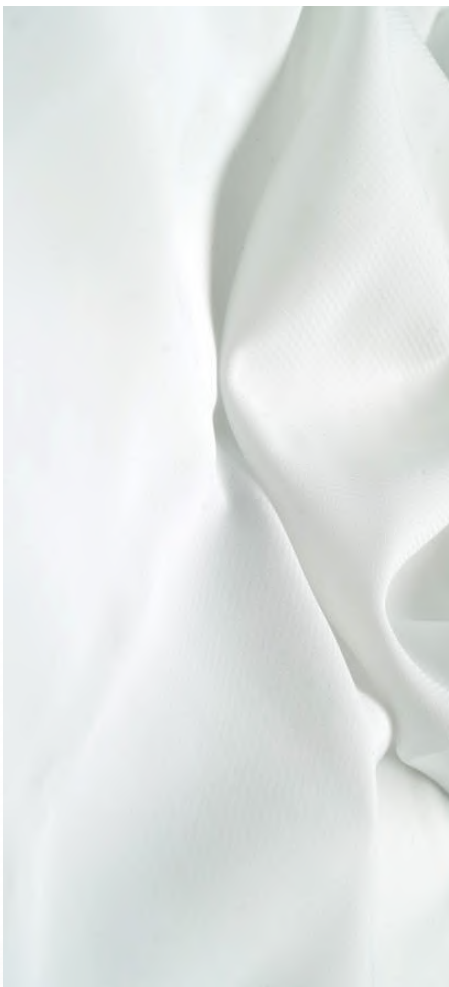
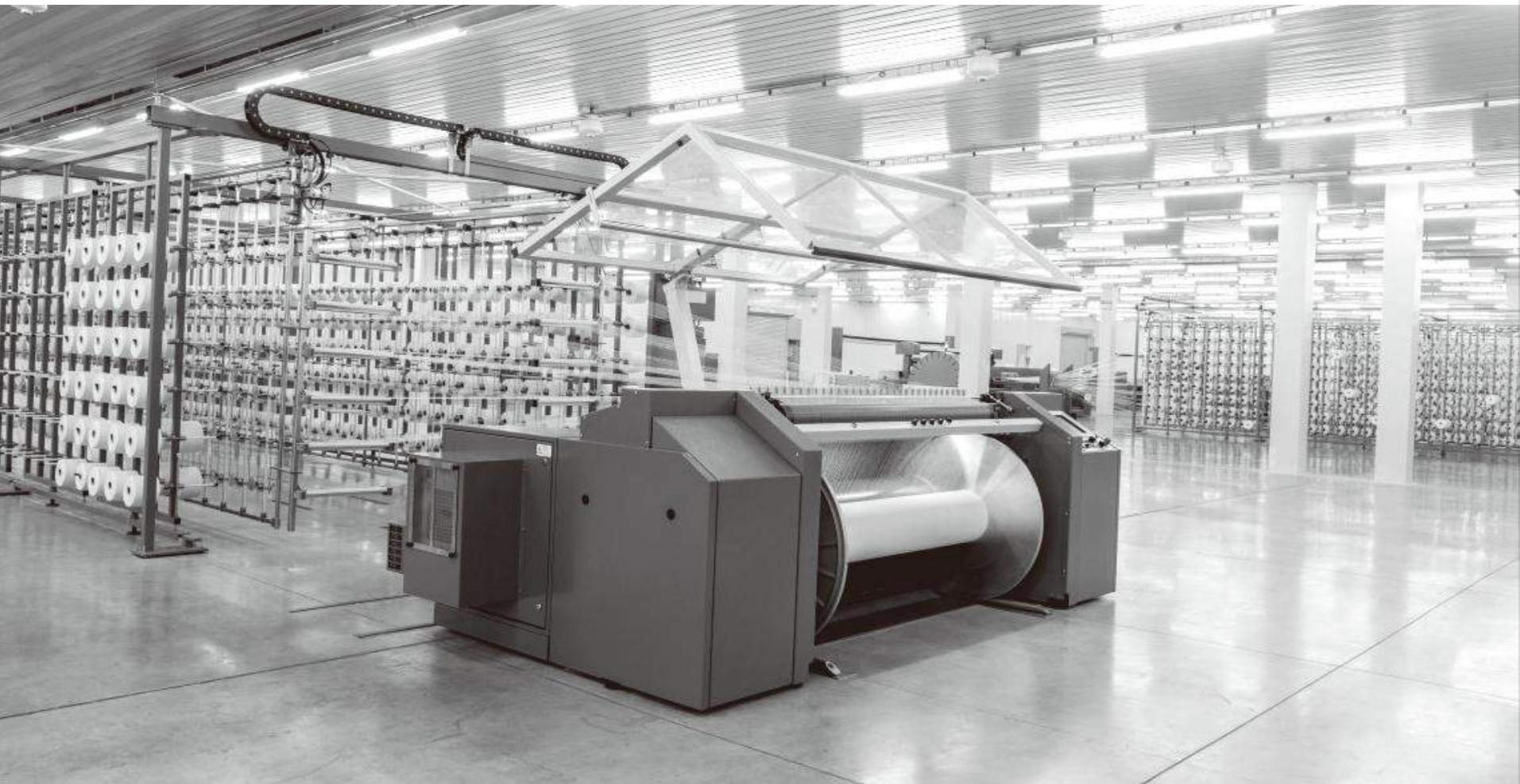
Save dyeing cost



Soft and elegant sheen

Improve fabric grade





DENIMS

APPARELS

KNITS

HOME TEXTILES

TEXHONG COTTON YARN

METHODS OF PROCESSING

- The dyeing and finishing processing are same as 100% cotton fabrics, no special modification is necessary.
- Counts from Ne8s to Ne 32s.
- Can be slub yarn, core spun yarn and dual core yarn.

USES

Denims—
Improved texture from traditional denim fabrics, using dual core yarns as weft will create an even better fabric effect.

Apparels—
Improved hand feeling from pure cotton

Knits—
Reduced skewing and torque, improved hand feeling

Home!textiles—
Comfortable to touch, excellent lustre

TEXHONG SUPER SOFT YARN

Upgraded yarn based on Low Torque Yarn.



Fluffy and Soft

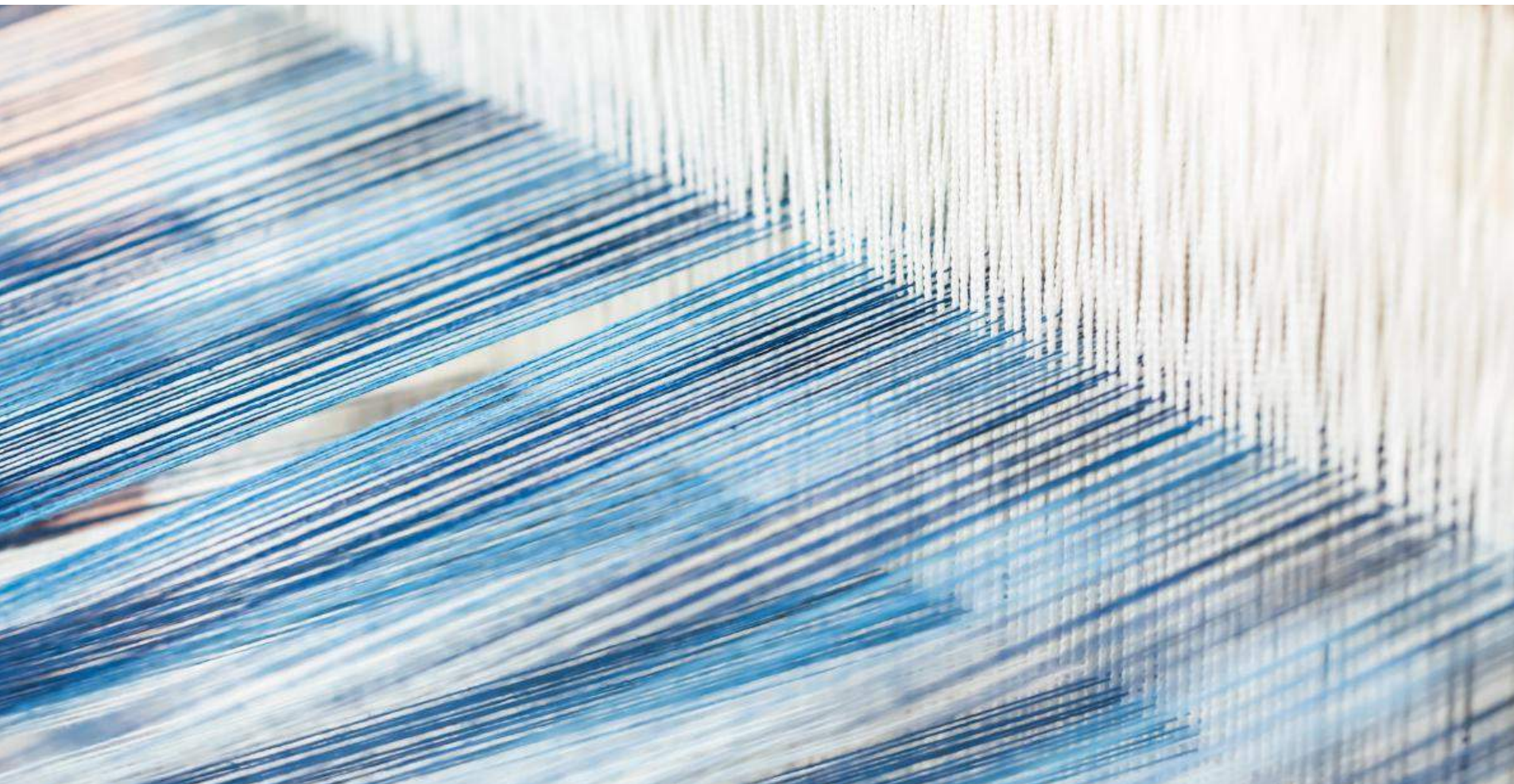
Special yarn structure



Better strength

Same strength comparing to normal
yarn under low torque condition





TEXHONG SUPER SOFT YARN

ADVANTAGE OF FABRICS

- More soft, fluffy and comfortable touch due to the special yarn structure
- Better strength: Same strength comparing to normal yarn under low torque condition



KNITTING



WEAVING



DENIM

USES

Counts from Ne 4.5S to Ne 21S

Suitable fibers: natural fibers like cotton, wool, different functional chemical fibers and blends.

Suitable for knitting, weaving and denim.



TEXHONG

LINEN-STYLE TENCEL YARN

Upgraded product based on tencel yarn. To spin the yarn with special technology by using lenzing tencel.



TEXHONG LINEN-STYLE TENCEL YARN

ATTRIBUTION

- Linen touch and appearance: fabric is stiff , smooth, delicacy and exquisite, with bright lustre,
- Hygroscopic ,Ventilate and Comfortable

USES

Counts from 10S to 60S